

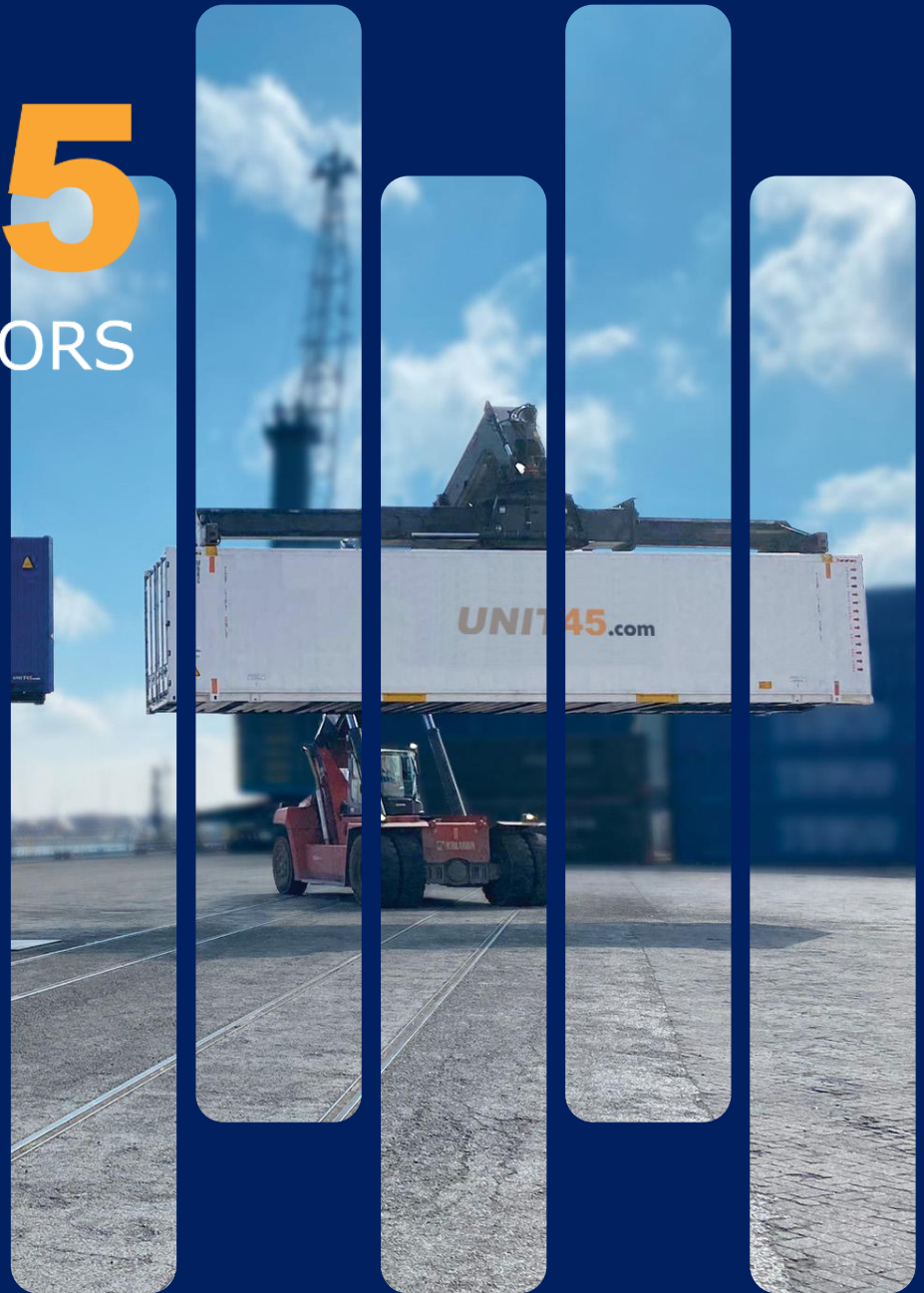
UNIT45

INTERMODAL INNOVATORS

Intermodal Wagons and
Loading Units



Webinar May 26th 2026

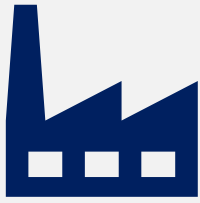


COMPANY

LEADERSHIP

FOCUS

INNOVATION



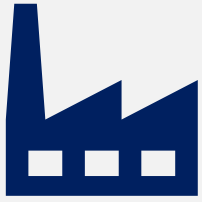
COMPANY

Privately owned
Dutch container
leasing company
based in
Rotterdam, with
11 employees,
founded in 2002.

LEADERSHIP

FOCUS

INNOVATION



COMPANY

Privately owned Dutch container leasing company based in Rotterdam, with 11 employees, founded in 2002.

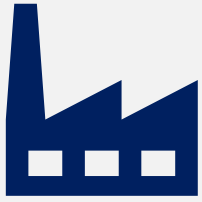


LEADERSHIP

Marketleader in 45' containers with a 65% market share.

FOCUS

INNOVATION



COMPANY

Privately owned Dutch container leasing company based in Rotterdam, with 11 employees, founded in 2002.



LEADERSHIP

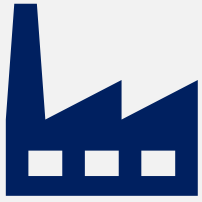
Marketleader in 45' containers with a 65% market share.



FOCUS

Focus on 45'palletwide high-cube containers for multimodal use within Europe

INNOVATION



COMPANY

Privately owned Dutch container leasing company based in Rotterdam, with 11 employees, founded in 2002.



LEADERSHIP

Marketleader in 45' containers with a 65% market share.



FOCUS

Focus on 45'palletwide high-cube containers for multimodal use within Europe

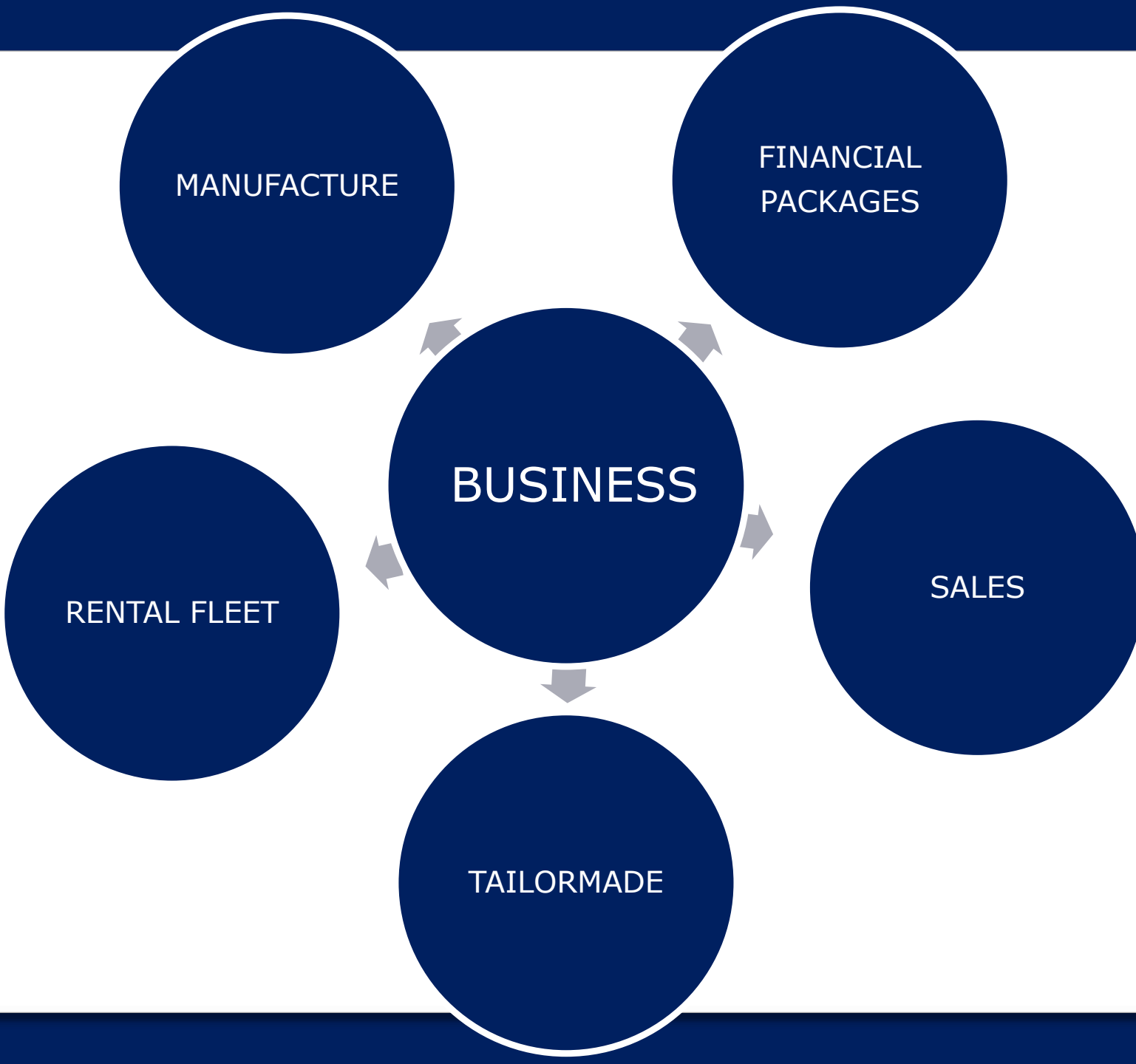


INNOVATION

Intermodal innovators with focus on development of tailormade solutions.



BUSINESS



MANUFACTURE

FINANCIAL
PACKAGES

BUSINESS

SALES

RENTAL FLEET

TAILORMADE

rental fleet
33000 units



rental fleet
33000 units

85%
dry

15%
reefers

rental option

financial
lease option

rental fleet
33000 units

85%
dry

15%
reefers

rental option

financial
lease option

4000-5000
units

rental fleet
33000 units

85%
dry

15%
reefers

rental option

financial
lease option

4000-5000
units

10%
reefers

direct sales

tailormade

Turnover 2025 -> 63 mio

DRY

- 33/34 euro pallets
- double stack
- double doors
- distribution unit
- hanging garment
- bulk container
- 10ft 6 high



DRY

- lightweight domex steel
- lightweight bamboo floor
- high doors and special intermediates
- high-solid paint



CURTAIN

- XL approved / EN 12641-2
- top lifting
- stacking



BULK

- 20' & 30' pw bulk
- loading hatches
- letterbox
- containers doors

- 45' pw bulk
- 7 loading hatches
- loading capacity >40 t.

- suitable for loading of plastic granules, sugar



REEFER

DIESEL ELECTRIC

- Thermo King Advancer A400
 - complete self-supporting unit
 - 250-liter diesel tank
 - track & trace
 - optional double stack
-
- aluminium lightweight diesel electric reefer



REEFER

DIESEL ELECTRIC

MULTI TEMPERATURE

- Thermo King Spectrum
- complete self-supporting
- 250-liter diesel tank
- 2/3 compartment reefer
- moveable Frigowall
- track & trace
- optional double stack



REEFER

DIESEL ELECTRIC LONG RANGE

- Thermo King Advancer 500
- 900-liter diesel tank
- track & trace
- special air duct system
- optional double stack (64 plts)
- optional lashing eyes
- suitable for pharmaceuticals (GDP)



REEFER

ALL ELECTRIC

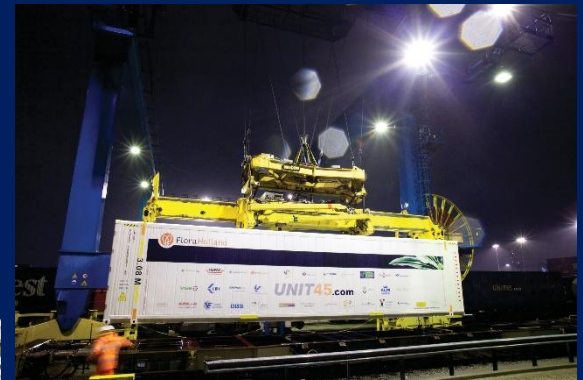
- Thermo King
Magnum Plus
- **New** Star Cool SCU 1.1
- weight reduction of
340 kg
- Honeywell LBA
foodgrade foam
- waterborne paint
- double stack
(66 plts)



REEFER

FLORA

- extra high & wide to load 43 roll cages
- led light inside
- diesel electric
- electric



PRODUCTION



THANK YOU

UNIT45
INTERMODAL INNOVATORS