

26.05.2026
11:00-12:30



INTERMODAL WAGONS AND LOADING UNITS



WEBINAR

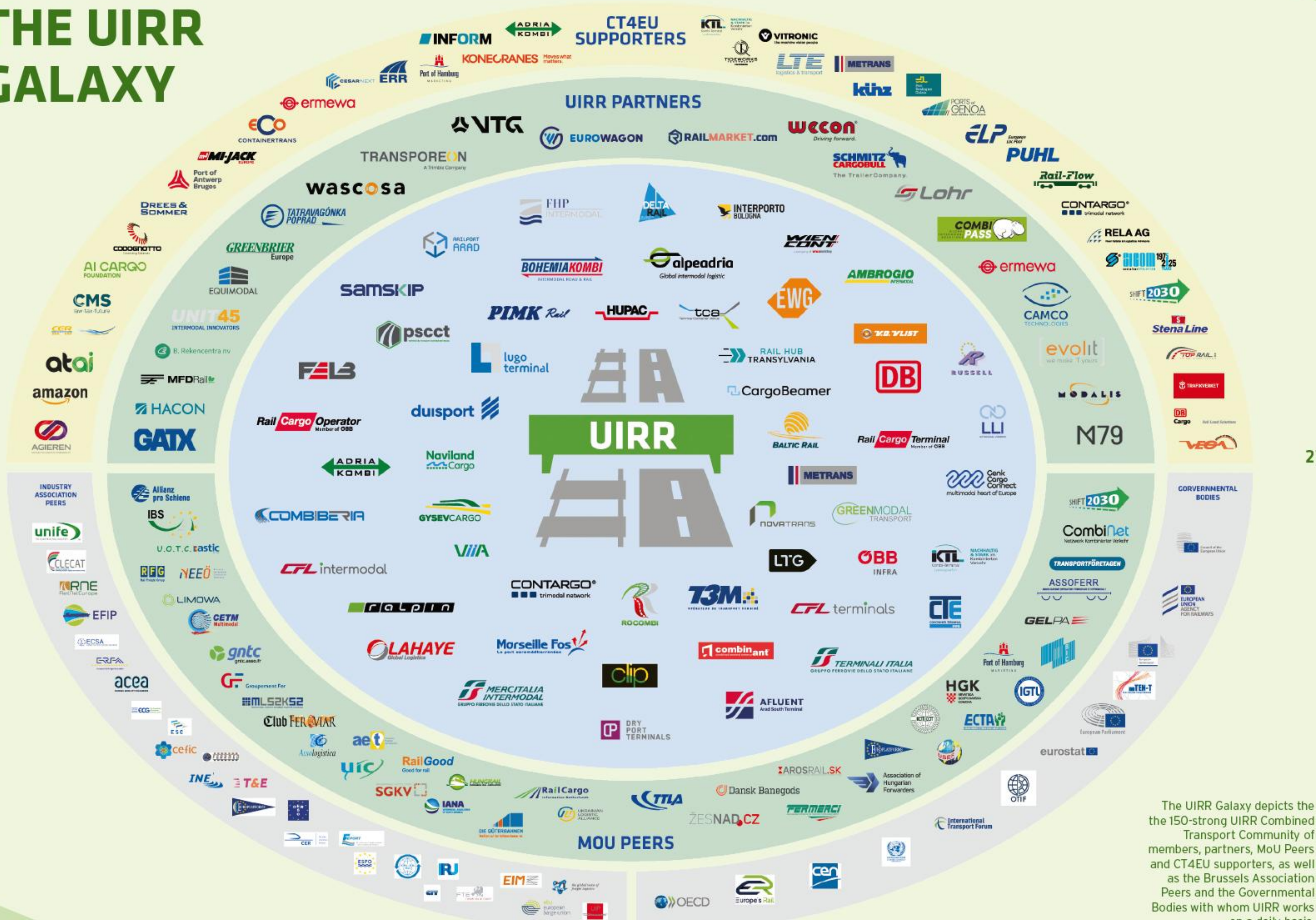
KEYNOTE CONTRIBUTIONS FROM
LEADING INDUSTRY PLAYERS

- Wecon
- Tatravagonka
- CFL Multimodal
- Combipass
- Unit45
- Modalis

- 11:00 – 11:05 Introduction
Eric Feyen - Technical Director - **UIRR**
- 11:05 – 11:20 Innovation in intermodal freight wagons
Ing. František Domanický - Sales Manager - **Tatravagonka**
- 11:20 – 11:35 Building an ecosystem for sustainable multimodal logistics
Nicolas Chambon & Pierre-Nicolas Chilles – **MODAL Group**
- 11:35 – 11:50 Intermodal innovators in loading units
Maria Genyn – Sales Manager - **UNIT45**
- 11:50 – 12:05 Customised solutions for road and rail logistics
Daniel Hemker – Managing Director - **Wecon**
- 12:05 – 12:20 Experience return on CFL lock-e deployment in CFL Freight rail operations
Marc Valette - Directeur Innovation - **CFL multimodal**
- 12:20 – 12:35 The new solutions for intermodal transport
Valentin Dominguez – Head of Innovation - **Combipass Iberica**



THE UIRR GALAXY



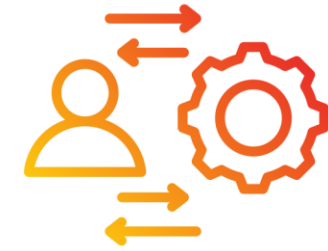
UIRR: the voice of intermodal freight transport in Europe

The UIRR Galaxy depicts the 150-strong UIRR Combined Transport Community of members, partners, MoU Peers and CT4EU supporters, as well as the Brussels Association Peers and the Governmental Bodies with whom UIRR works on a daily basis.



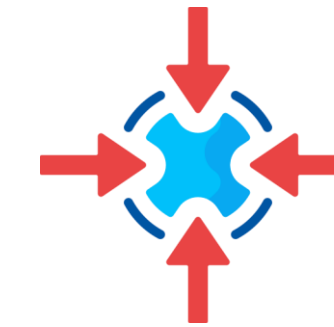
Mission

- Promote the efficiencies of Combined Transport
- Improve the recognition of Combined Transport's advantages among policy and business decision-makers.



Approach

- Fact-based insights with studies.
- Cross-sector collaboration at EU and local level.
- Constructive engagement with policymakers at EU and national levels.



Impact

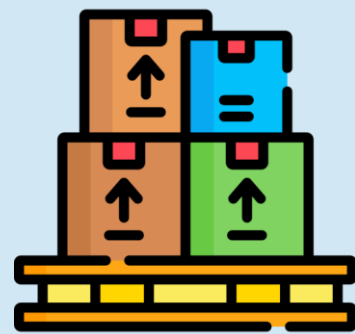
- Strengthening the sector's voice to ensure Combined Transport is recognised as a key pillar of Europe's freight transport system.

Join us today!



Rail Interoperability through standards (ISO, CEN, UIC)

Goods to be transported



shutterstock.com - 2587647259



Intermodal loading units

20ft DRY CONTAINER		The most common container for general cargo. ISO 668
40ft DRY CONTAINER		Double the length of a 20ft container for more cargo capacity. ISO 668
HIGH CUBE CONTAINER		Extra height (9'6") for lightweight, bulky cargo. ISO 668
REEFER CONTAINER		Temperature-controlled container for perishable goods. ISO 1496-2
OPEN TOP CONTAINER		Open top for easy loading of tall or top-heavy cargo. ISO 1496-3
FLAT RACK CONTAINER		Collapsible ends for oversized or irregular shaped cargo. ISO 1496-5
PLATFORM CONTAINER		Flat platform with no sides or ends for maximum flexibility. ISO 1496-6
TANK CONTAINER		For liquids, gases or dry bulk cargo. ISO 1496-2
SWAP BODY		Interchangeable body that can be quickly transferred between truck and rail. ISO 13271
ROLL TRAILER		Wheeled unit designed to be rolled on and off ships, trains and trucks. ISO 9367-2

Intermodal freight wagons

	POCKET WAGON Low floor with "pockets" to accommodate containers. Suitable for 20ft, 30ft, 40ft and 45ft containers. Containers (20ft - 45ft)
	MODULAR WAGON Flexible wagon with adjustable stops to carry containers of different lengths. Containers (20ft - 45ft)
	WELL WAGON Lowered well section allows taller containers (including high cube) to be transported. Containers (20ft - 45ft, including high cube)
	FLAT WAGON (CONTAINER / COMBI) Flat deck for transporting containers or swap bodies. Can be equipped with twistlocks. Containers Swap bodies
	POCKET WAGON FOR SWAP BODIES Designed with pockets and locking systems to carry swap bodies. Swap bodies
	T3000 WAGON Specialized wagon for road semi-trailers (with or without containers). Road trailers
	SIDE-LOADING WAGON Containers are loaded and unloaded from the side using cranes. Containers (20ft - 45ft)
	TANK CONTAINER WAGON Designed to safely transport tank containers for liquids, gases and bulk materials. Tank containers