

Introducing improved rail ferry services

Rail ferry pilot, strategy & action plan

- Long-term goal:
- Improved rail ferry service and preparations for necessary adjustments in the port

Interreg
Baltic Sea Region



Co-funded by
the European Union



BLUE ECONOMY

Blue Supply Chains





Agenda

14:00 – 14:05

- Welcome and Introduction to the BSC project and the ferry case
- Results of consultation studies and potential for policy support measures

14:05 – 14:30

Rail Ferry Introduction and Perspectives

- Perspective from rail ferry operator: Mikko Juelich (MD – Stena Line GmbH & Co KG)
- Challenges and opportunities: Port of Trelleborg (Torgny Nilsson - Business Development)
- Challenges and opportunities: Port of Rostock (Dr. Gernot Tesch - MD)

14:30 – 14:55

- Panel Discussion & Q&A
- Moderated by Ralf-Charley Schultze (Director-General of UIRR)

14:55 – 15:00

- Wrap-up of discussions, next steps within the new EU political landscape
- Ralf-Charley Schultze (Director-General of UIRR)



Rail ferries on Rostock-Trelleborg

24. February 2025
Mikko Juelich



Our Swedish heritage

Our company is shaped by our Swedish roots and the fact we are a family-owned company.

Our founder, Sten Allan Olsson, grew up in a fishing community on a small island named Donsö in Gothenburg's archipelago in the 1920's.

On the Island of Donsö resources were scarce and our founder learned at a young age that caring for each other, hard work and always delivering on a promise were fundamental values both in life and business.

Today, the values of care – caring for customers, caring for resources and caring for each other – still guide us.



Stena Line in numbers



6,100
employees



20 ferry routes
6 owned ports



40 vessels
33,300 yearly sailings



360+
energy saving
projects



2.1
million freight
units



1.8
million cars



6.5
million guests



19
billion SEK
in turnover

Stena AB – our extended family

Stena Line is part of Stena AB and together we have 17,400 employees around the world working every day to create value for our customers in Ferry Operations, Offshore Drilling, Shipping, Property and New Businesses.

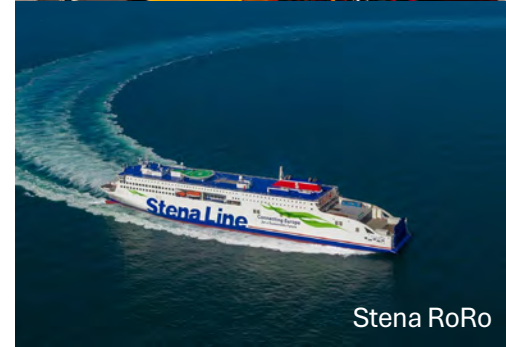
- Stena Drilling
- Stena Teknik
- Stena RoRo
- Stena Property
- Northern Marine
- Stena Adactum
- Stena Finance
- Stena Sessan



Stena Drilling



Stena Teknik



Stena RoRo



Stena Property



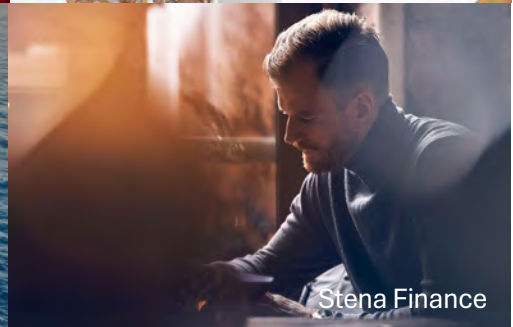
Northern Marine



Stena Adactum



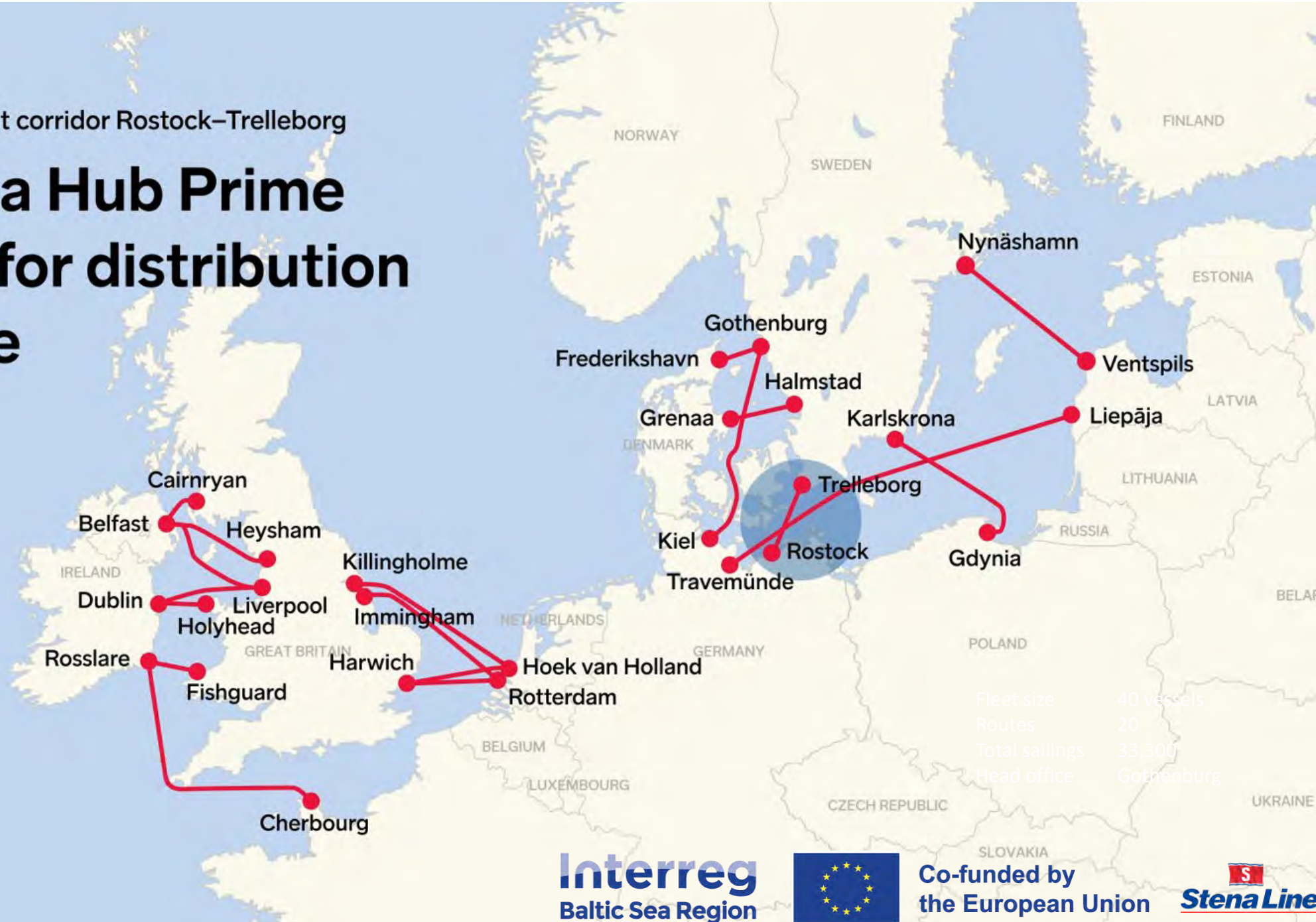
Stena Bulk



Stena Finance

A European transport corridor Rostock–Trelleborg

Baltic Sea Hub Prime location for distribution in Europe



Fleet size	40 vessels
Routes	20
Total sailings	33,300
Head office	Gothenburg



Interreg
Baltic Sea Region



Co-funded by
the European Union



Future-proof

- Stena Line invests continuously in rail infrastructure on the ferries
- Continue to offer a high frequented and reliable service with 6 sailings per day and rail capacity of 1000m per sailing
- Sustainability on vessels such as AI on board, silicon painting, on shore power
- Commitment to extend the lifespan of the ferries by minimum 15 years by refitting all machines on board
- <https://vimeo.com/932477421/a73f973087?share=copy>



Interreg
Baltic Sea Region



Co-funded by
the European Union



BLUE ECONOMY

Blue Supply Chains

Thank you!

24. February 2025
- Mikko Juelich



Stena Line



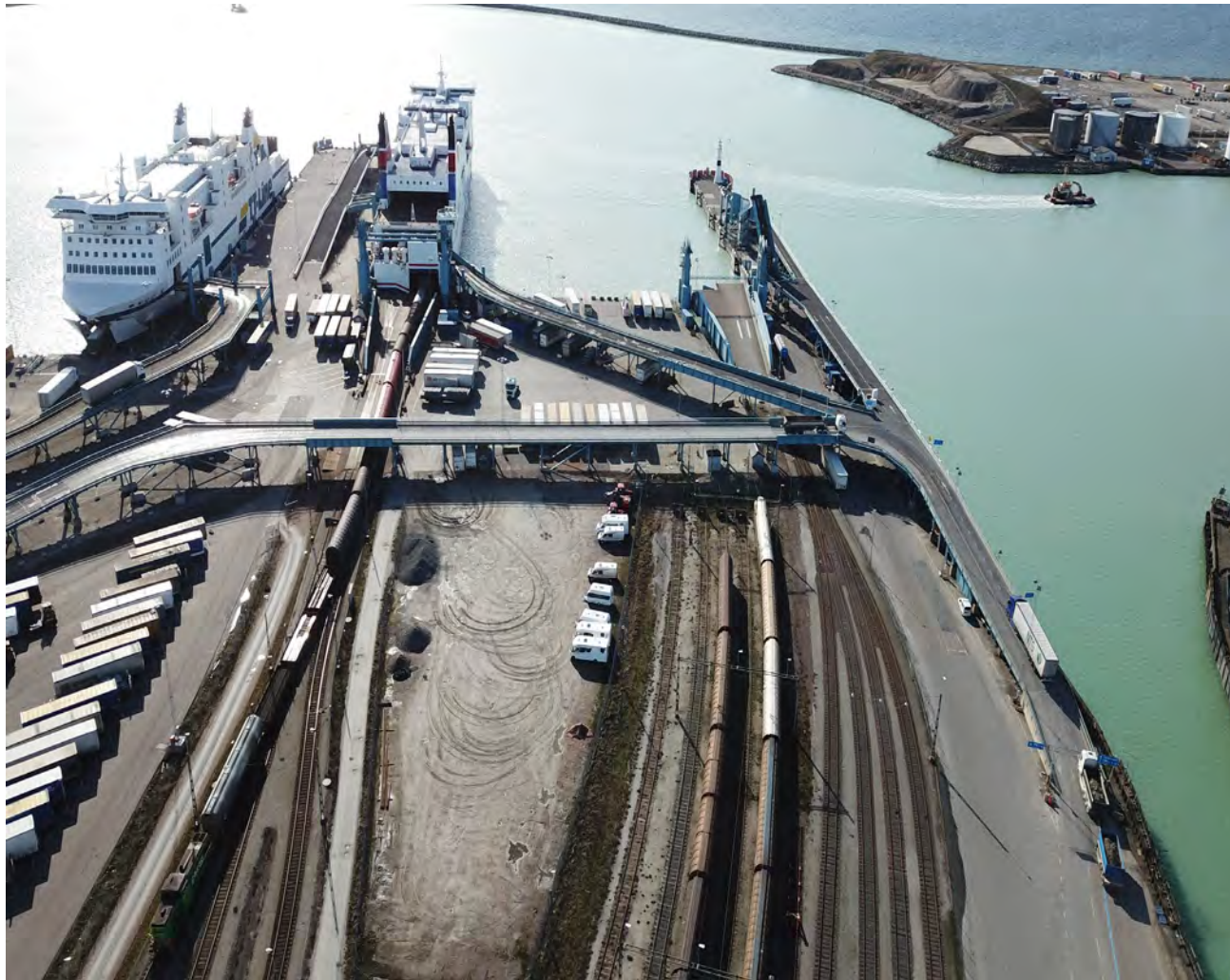
Railwayferries

2025-02-17



We expand the port capacity and will create the cleanest port in the Baltic Sea

Our two railwayferry berths



Railwayferry and operation



Marshalling yard





Interreg
Baltic Sea Region



Co-funded by
the European Union

 BLUE ECONOMY
Blue Supply Chains

Challenges and opportunities of rail ferry – Perspective from port of Rostock

Dr. Gernot Tesch, 24.02.2025



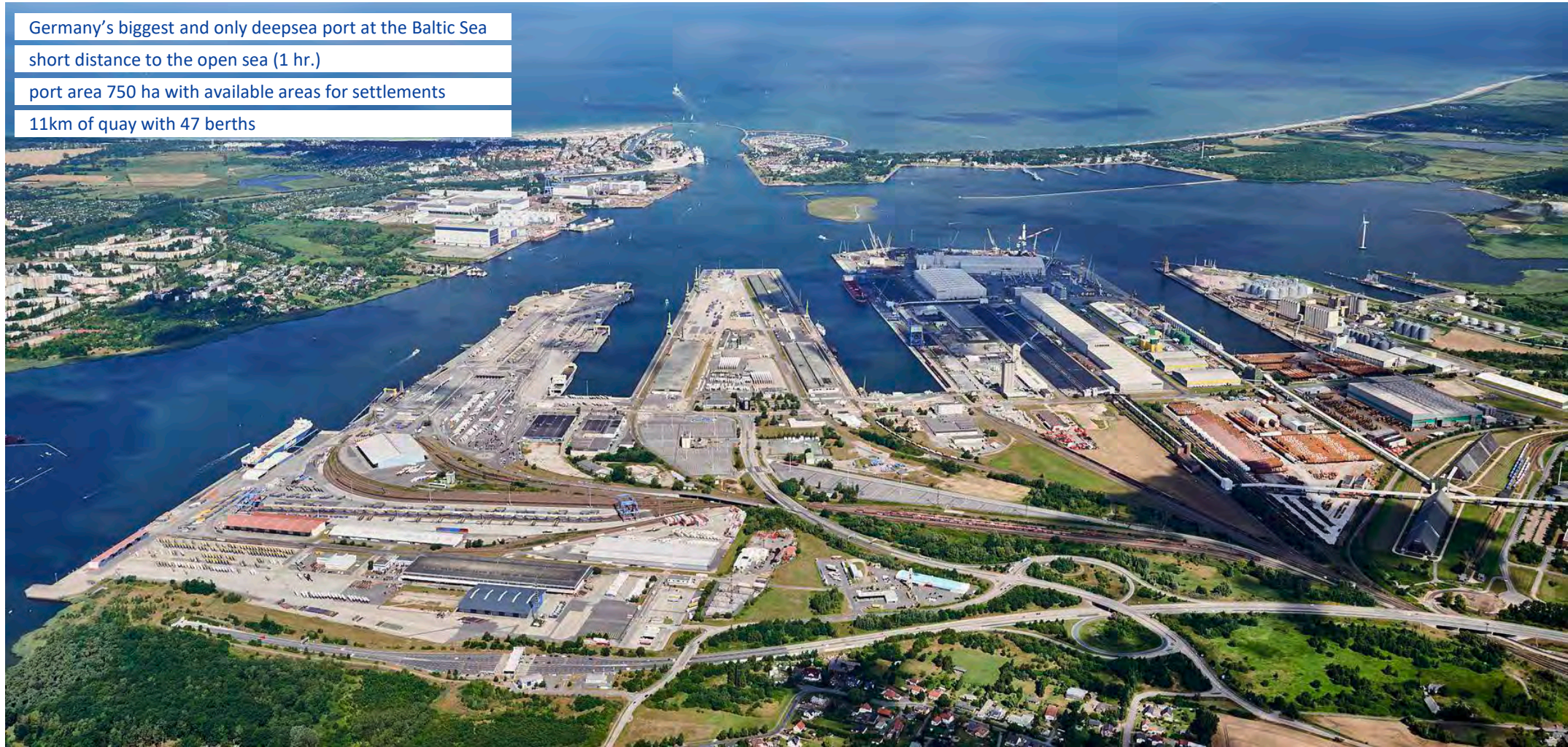
Port of Rostock

Germany's biggest and only deepsea port at the Baltic Sea

short distance to the open sea (1 hr.)

port area 750 ha with available areas for settlements

11km of quay with 47 berths

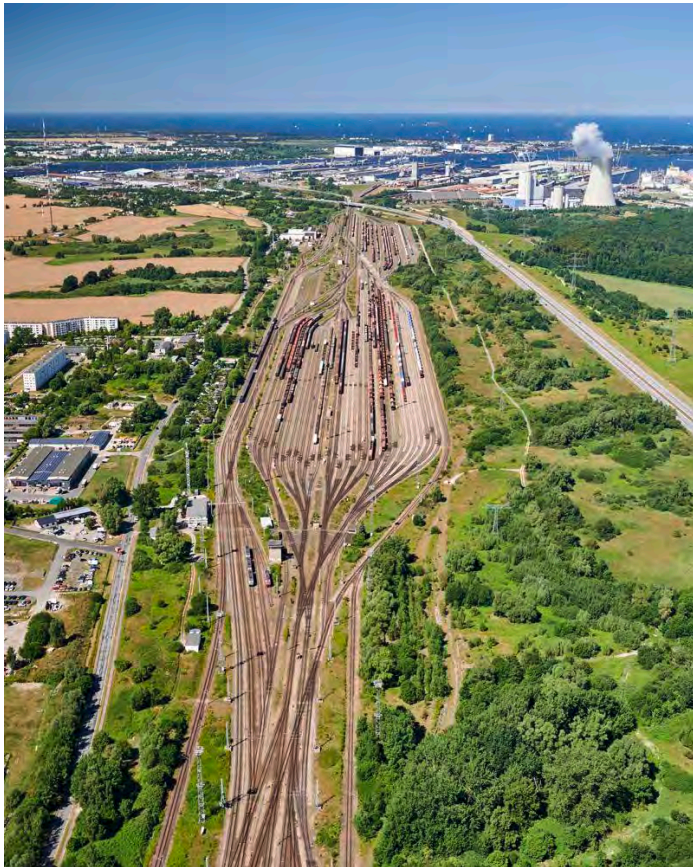


Ferry & Ro/Ro terminal and Liner services

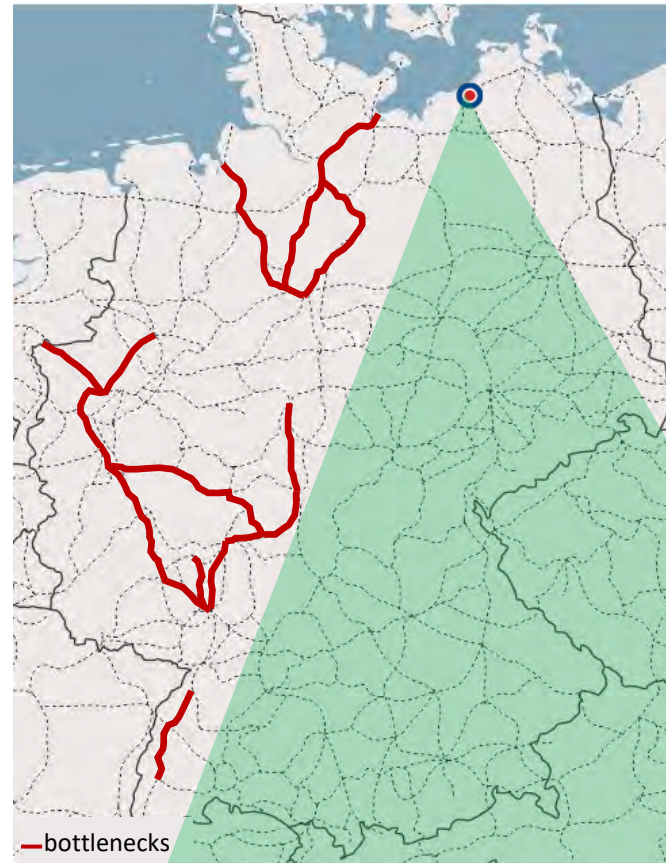


Railway port

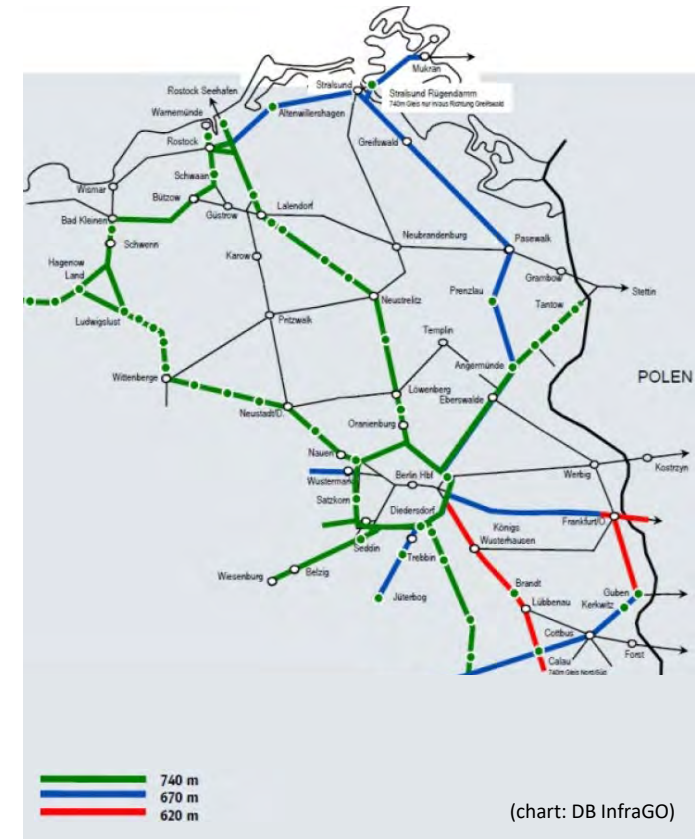
54 km rail tracks inside the port, 180 km shunting yard and a 300m € investment of DB InfraGo for the renewal



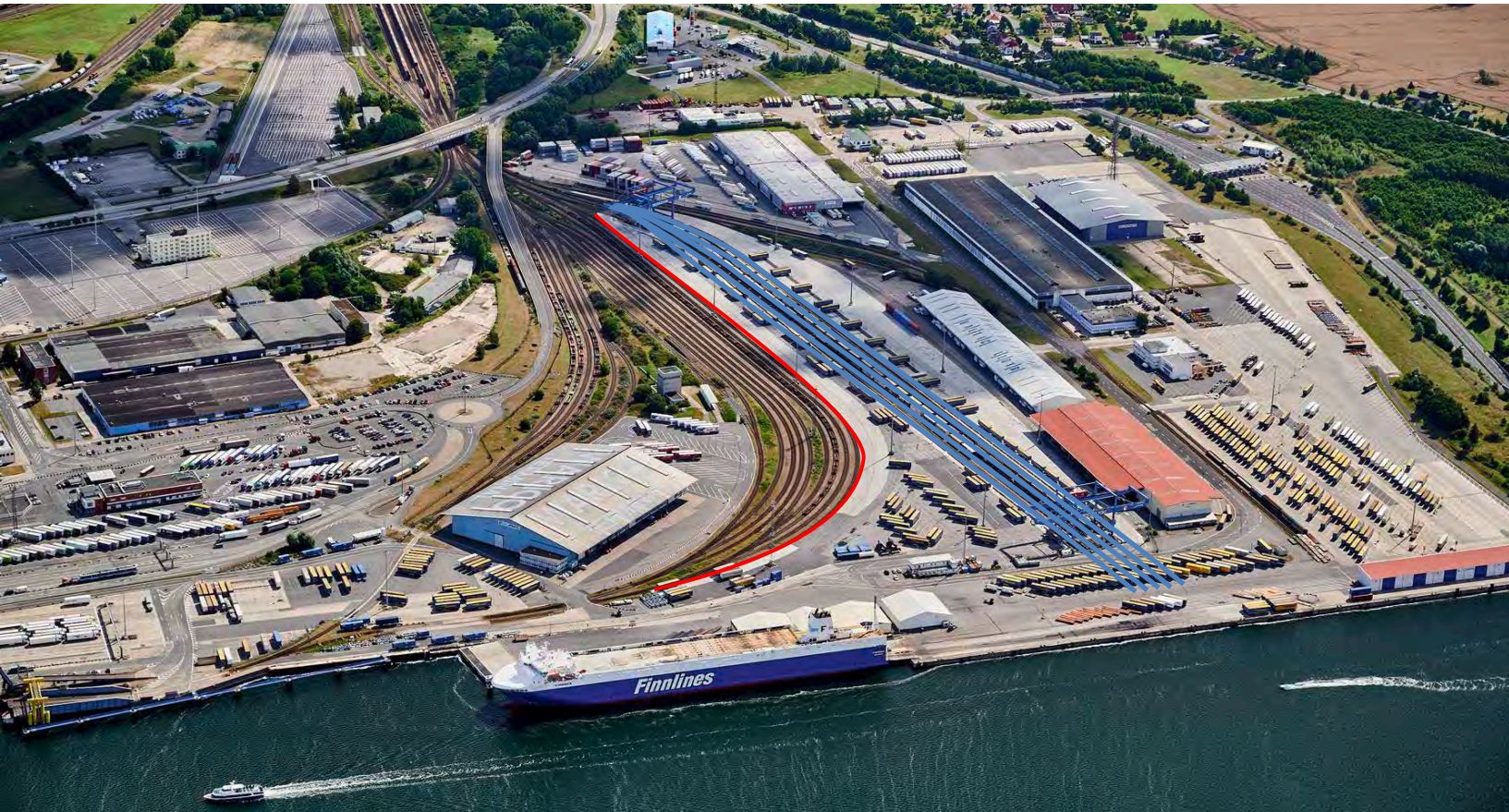
Available track capacity in Rostocks hinterland (in contrast to corridors more westerly)



740 m track network in Rostocks hinterland



Intermodal terminal and network



- 5 tracks – 600 m with 2 portal cranes
- 1 track – 740 m with reachstackers
- Service: 24/7 365 days
- very short distances to the ferry- & ro/ro berths
- Terminal expansion in planning



Conventional wagon load by ferry

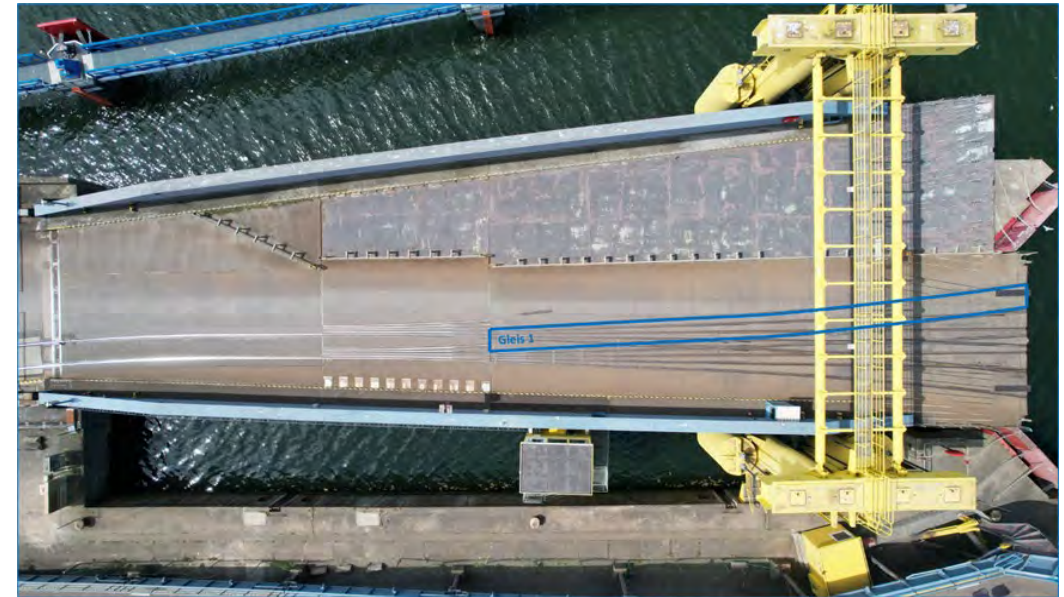
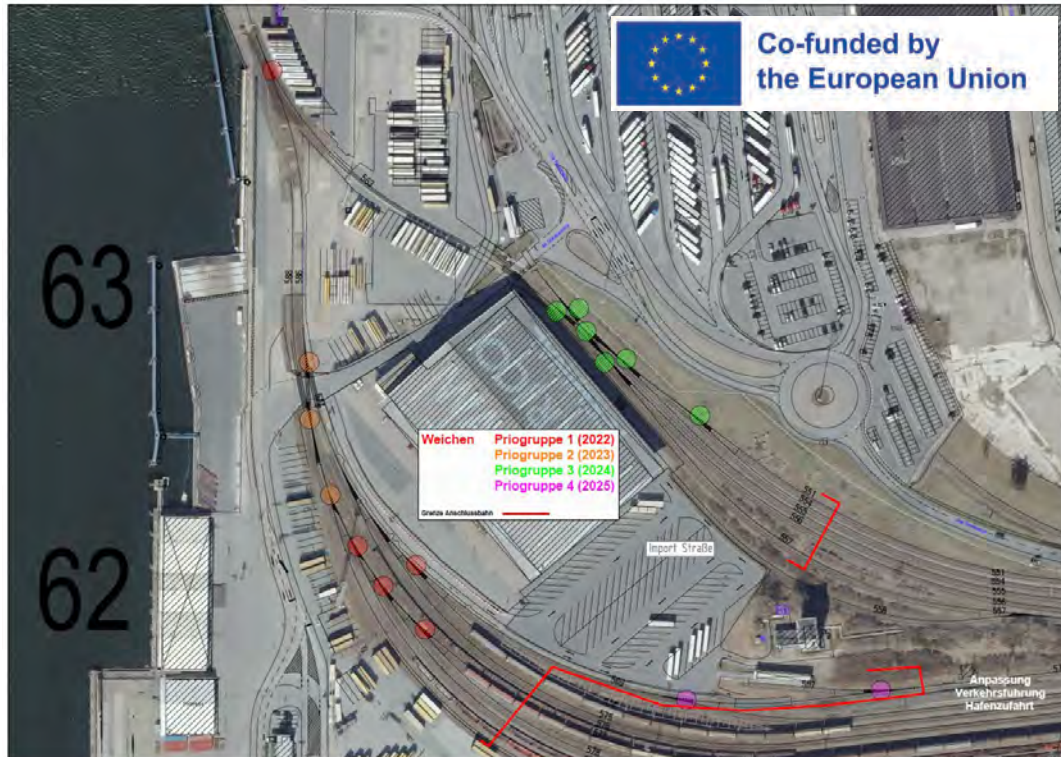


The biggest railway ferries worldwide operated by Stena Line.



Accessibility of the rail ferry berth for conventional wagon load

- 2023 - 2025
- reconstruction of technically insufficient sections of the rail access system (replacement of rail tracks and exchange of switches) within the **Rail-IT-MoS** project (CEF Transport programme)
- ca. 3.2 million EUR investments for rail-track related works



Further challenges:

- berth 64 can accommodate only the two rail ferries (Skane and MV) from Stena Line due to its unique construction and their lifetime is limited
- tracks on the ramp of berth 64 have reached the end of their technical lifespan and need to be replaced immediately (appr. 2.5 million EUR investment)



Interreg
Baltic Sea Region



Co-funded by
the European Union



BLUE ECONOMY

Blue Supply Chains

Thank you for your attention!



ROSTOCK PORT

Opening new horizons



www.rostock-port.de

Panel Discussion



Ralf-Charley Schultze
Director General



Inga Gurries
Head of Market Development Asia & Overseas



Mikko Juelich
Managing Director



Col Gert Dobben
Head of Division Resources Support



Kosta Tsesmetsis
CRM Manager



Dr Gernot Tesch
Managing Director



Torgny Nilsson
Business Development



Tomas Arvidsson
Chairman





THANK YOU

